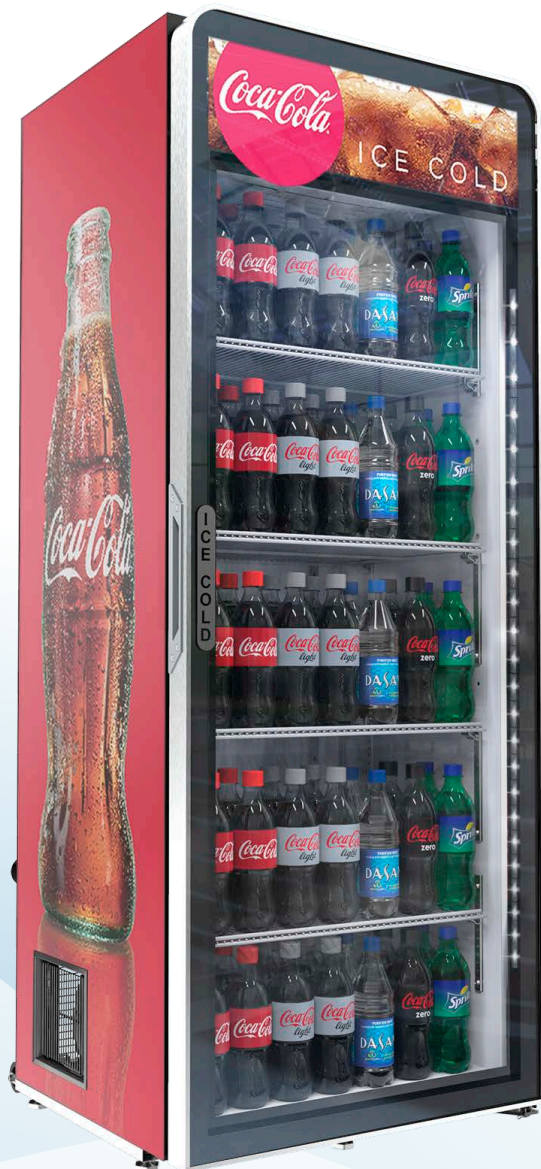




# VR13 CZ

Establishing a NEW STANDARD in the commercial refrigeration industry.

The new Imbera Coke *Contemporized* lineup features a full-length, rounded glass door for enhanced product visibility and larger packouts. Cabinet redesign includes aluminum door frame and rollers for easy maintenance.



## KEY FEATURES



### ECO-FRIENDLY NATURAL REFRIGERANT

New R290 HFC-free refrigerant gas that reduces environmental impact and increases efficiency.



### ELECTRONIC TEMPERATURE CONTROLLER & IOT CAPABILITIES

Patented *Wellington SCS Connect* electronic controller assures optimal performance through precision control, and comes with an extensive fleet management capability, including tracking, sales data, HACCP logging, smart maintenance and diagnostics.



### ELECTRONIC FAN MOTORS

Enhances performance and efficiency. Improved even airflow that uses only a fraction of the energy and offers longer life expectancy than industry standard shaded-pole motors.



### NEWLY DESIGNED CONDENSER

New condenser featuring a joints reduction down to zero increasing long term refrigeration reliability and safeguarding against any system leaks.



### 300 LUX LED AVERAGE ILLUMINATION

New 5th generation constant power high efficiency LED uses lowest energy possible, with highest light output.



### COMPLETE CABINET REDESIGN

Full-length, rounded glass door with elegant aluminum frame, 300 LUX LED strips, and a durable pocket handle. Cabinets come with rollers for improved serviceability.



COMMERCIAL REFRIGERATOR AND/OR FREEZER 9242

NSF/ANSI 7 COMMERCIAL REFRIGERATOR AND/OR FREEZER 2019

# VR13 CZ



## TECHNICAL SPECIFICATIONS

|                                   |                |         |
|-----------------------------------|----------------|---------|
| <b>External Dimensions</b>        | H:             | 63 1/7" |
|                                   | W:             | 24 5/6" |
|                                   | D:             | 25 1/8" |
| <b>Internal Dimensions</b>        | H:             | 59 2/7" |
|                                   | W:             | 21 8/9" |
|                                   | D:             | 18 6/7" |
| <b>Usable Internal Dimensions</b> | H:             | 59 2/7" |
|                                   | W:             | 20 2/3" |
|                                   | D:             | 17 2/3" |
| <b>Volume</b>                     |                | 332.1 L |
| <b>Doors</b>                      | 1              |         |
| <b>Doors construction</b>         | Aluminum Frame |         |
| <b>Shelves</b>                    | 4              |         |
| <b>20 oz bottle capacity</b>      | 182            |         |
| <b>12 oz bottle capacity</b>      | 368            |         |

## REFRIGERATION DATA

|                                     |                           |                            |
|-------------------------------------|---------------------------|----------------------------|
| <b>Refrigerant R290</b> (oz)        | 1.94                      |                            |
| <b>Energy Consumption</b> (kWh/24h) | 1.932                     |                            |
| <b>Compressor</b> (hp)              | 1/5                       |                            |
| <b>Condenser</b>                    | Low maintenance)          |                            |
| <b>Evaporator</b>                   | Dynamic                   |                            |
| <b>Thermostat Setting Default</b>   | <b>Cut-Out</b> 32°F (0°C) | <b>Cut-In</b> 44.6°F (7°C) |
| <b>Noise</b>                        | TBD                       |                            |

## ELECTRICAL DATA

|                         |                        |         |
|-------------------------|------------------------|---------|
| <b>Power Supply</b> (V) | 115                    |         |
| <b>Amps</b> (A)         | 1.7                    |         |
| <b>Cord Length</b>      | 118"                   | 3000 mm |
| <b>Lighting</b>         | 300 LUX on average     |         |
| <b>Plug type</b>        | PC-731                 |         |
| <b>Controller</b>       | Wellington SCS Connect |         |